

PORTFORLIO - NATHA OUT OF THE BLUE

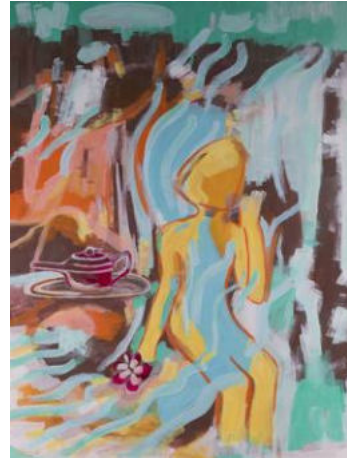
WORK
SHOW
ABOUT
CONTACT



LATEST WORK



32. Touching the other side
19.6" x 27.5"



33. Soul of the river
23.6" x 31.4"



37. The birdy fly
31.4" x 23.6"



34. Tackle the unknown
35.7" x 27.5"



35. Wanderer in the mist
27.5" x 27.5"



36. Reduce the external input
35.4" x 27.5"

WORK



28. You are your navigator
31.4" x 19.6"



29. Move into it fluidly
31.4" x 19.6"



30. To be all one
31.4" x 19.6"



31. Carried away to return home
27.5" x 35.4"



25. She is transformed
19.6" x 23.6"



26. Walking through the shadow
19.6" x 23.6"



27. Dancing on her own
19.6" x 23.6"

WORK



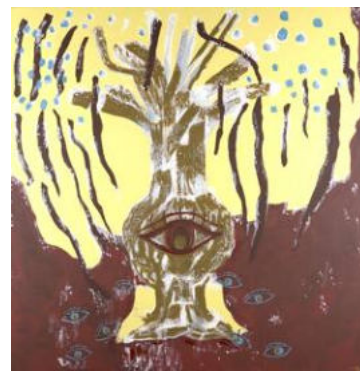
23. The players
19.6" x 27.5"



20. The protectors
27.5" x 27.5"



21. The existence
31.4" x 23.6"

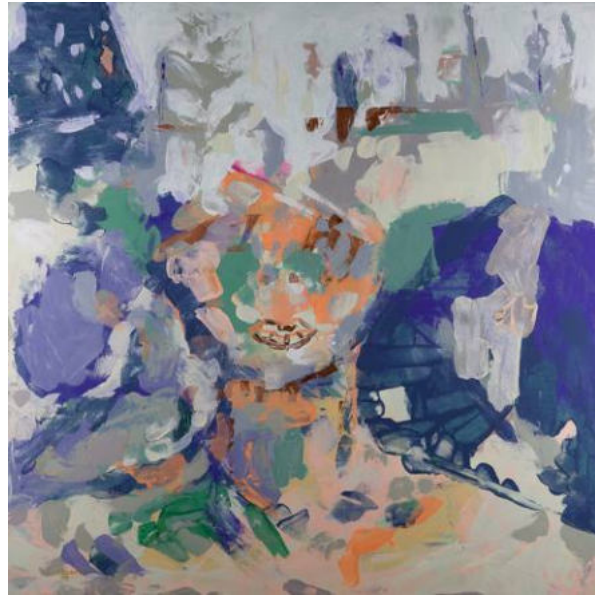


24. The watcher
27.5" x 27.5"



22. The lover
31.4" x 23.6"

WORK



18. Surrender
27.5" x 27.5"



19. Love
27.5" x 27.5"

WORK



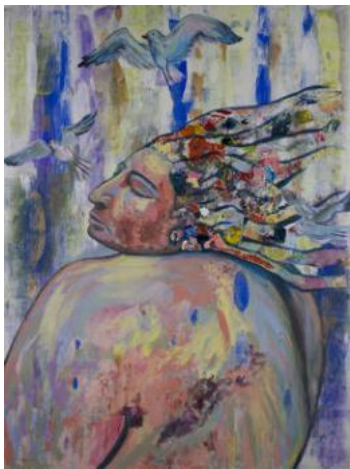
9. Beauty lie within I - accept
31.4" x 23.6"



10. Abundance
19.6" x 15.7"



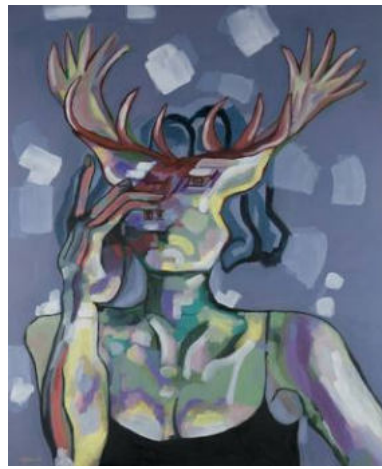
11. What are you doing today
31.4" x 23.6"



12. Free your mind like the birds fly
23.6" x 31.4"



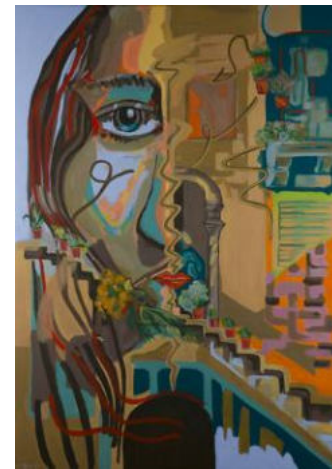
13. Be positive
15.7" x 19.6"



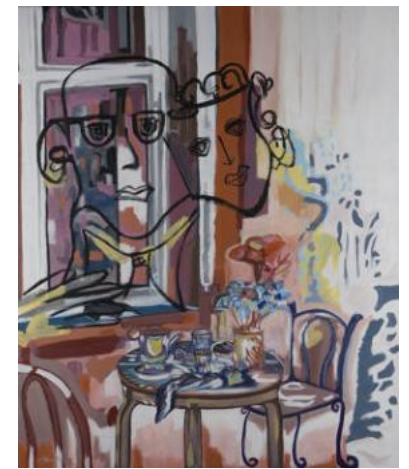
14. Still listening to you
19.6" x 23.6"



15. Lay back to restore
19.6" x 27.5"



16. Living together
19.6" x 27.5"



17. Yes, please
19.6" x 23.6"

WORK



1. Circle
15.7" x 15.7"



2. Triangle
15.7" x 15.7"



3. Rhombus
15.7" x 19.6"



4. Parallelogram
15.7" x 19.6"



5. Rectangle
15.7" x 19.6"



6. Enjoy little things day by day
23.6" x 15.7"



7. Hexagon
23.6" x 15.7"



8. Pentagon
23.6" x 15.7"

SHOW

CFA Artist of the Year Contest - Excellence [Art collaboration2023](#)

info@circle-arts.com info@circle-arts.com ygg m.convertkit.com to me



Dear Nathakorn,

We are emailing today with the results' announcement for our Artist of the Year Award. With 636 participants from around the world, selecting only a handful of winners was not an easy task. This year's winners as posted on our website <https://circle-arts.com/aoy-announced> are:

- 1st Place Award - Thomas W Schaller (Watercolor, USA)
- 2nd Place Award - Jingling Li - (Drawing, China)
- 3rd Place Award - Marc Brousse - (Multidisciplinary, France)

It is great pleasure to let you know that your artwork "To be all one" really stood out to me and you have been selected for an Artistic Excellence Award.

For this, we have prepared for you a unique, named & signed Artistic Excellence Certificate, which I will email back to you if you simply reply to this message. (I am not including it here, to make sure that you get this message!)

VOICES OF TOMORROW

by Entrepreneurial Art Center Magazine



NATHA OUT OF THE BLUE

Thailand | nathaoutoftheblue.com

Natha Out of the Blue represents part of her name (Nathakorn) and her spontaneity. Changrai, north of Thailand is her origin working studio base. She is a self-taught artist that has been creating her subject matter that blends with her inspiration and design on her canvas with several techniques she learned. Painting on canvas, she will be preparing her gouache color from the pigment mixing them with the binders. She uses gouache to have some earth tone that she likes. Acrylic colors will take part and being playful on her canvas. The way "OUT OF THE BLUE" when she started her most of the time, it is when she feels drawn to establish the creation with a plentiful amount of energy. She states "The most of each artwork sometimes are guided through my intuition from the soul artist". She tries to convey the message of the artwork to touch upon the viewers. She hopes that her artwork has opened to the viewers in certain way. These artworks are in the online "Nathakorn". This was done during summer 2021 when she was been in contact with other changes. It set her attention to show deeply into her own darkness. She was not with darkness and it set her: the light is not her goal state. She completed from early morning, that and sometimes. She is connecting with herself to pass through these rights. It is common and not usually service symptoms. The experience has been a big inspiration for this artist.



Showing through the shadow - 2022. Acrylic, gouache, ink on canvas

Showing in the heart - 2022. Acrylic, gouache, ink on canvas

ART UN/CLOSE

CONTEMPORARY ART CURATOR MAGAZINE

Interview with Natha Out of the Blue

Natha Out of the Blue represents part of her name (Nathakorn) and her spontaneity. Changrai, north of Thailand is her origin working studio base. She is a self-taught artist that has been creating her subject matter that blends with her inspiration and design on her canvas with several techniques she inspired. Painting on canvas, she will be preparing her gouache color from the pigment mixing them with the binders. She uses gouache to have some earth tone that she likes. Acrylic colors will take part and are playful on her canvas. The way "OUT OF THE BLUE" when she started her most of the time, it is when she feels drawn to establish the creation with a plentiful amount of energy.

Follow Us

LA Art Show Update [info@artifactsnyc.net](#)
 info@artifactsnyc.net
 Diva Yella
 It was a privilege to bring your extraordinary work at the Los Angeles Art Show. The artist and the target of this art show was the West Coast. It took place on February 17-18, 2023 at the L.A. Convention Center sponsored as a venue for lay events, including Events and Community Events.

Online and the exhibiton by Artifact Nyc gallery for one-year participation 12images selected

Digital Screen exhibition 2023 venue

LA artshow-feb
 ArtexpoNYC - april
 Hamptons Fineart fair - july
 Red dot Miami- december

SHOW



Natha Out of the Blue

The Existence, 2022

Acrylic, gouache on paper
24 x 31 2/5 x 11 1/2 in | 61 x 79.8 x 3.8 cm

- This is a [unique work](#)
- This work includes a [Certificate of Authenticity](#)

US\$2,690

[Save](#) [View in room](#) [Share](#)

[Make an Offer](#)

[Contact Gallery](#)

About the work

NYC Artwalk New York	Follow
Medium	Painting
Condition	New
Signature	Hand-signed by artist
Certificate of authenticity	Included
Frame	Not included

Shipping and Taxes [v](#)

Be covered by the Artsy Guarantee [v](#)

[NYC Artwalk](#)
New York

Get notifications for similar works [Create Alert](#)

 **Natha Out of the Blue**
Thai, b. 1991 [Follow](#)

Other works by Natha Out of the Blue

[View All](#)



Natha Out of the Blue
The Lovers, 2022
NYC Artwalk
US\$2,690



Natha Out of the Blue
Love-Beauty Lies Within, 2022
NYC Artwalk
US\$2,745

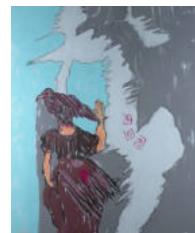


Natha Out of the Blue
The Players, 2022
NYC Artwalk
US\$2,070

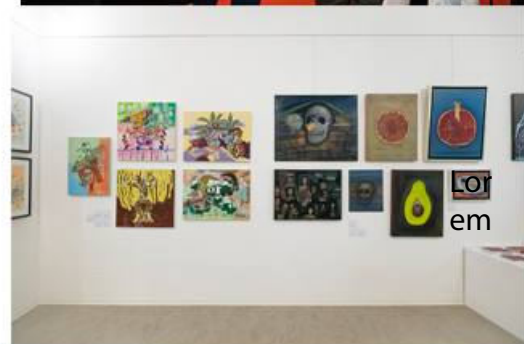


Natha Out of the Blue
Yes, Please, 2022
NYC Artwalk
US\$1,850

REPRESENTED BY "- NYC Artwalk Egallery contract- 10 images



SHOW



Physical EXHIBITION 2022

■ ITSLIQUID

EXHIBITION REVIEW: ANIMA MUNDI 2022 – VISIONS
ITSLIQUID INTERNATIONAL ART FAIR
VENICE | JUNE 16/17 – JULY 06, 2022
PALAZZO ALBRIZZI-CAPELLO | PALAZZO BEMBO



EXHIBITION REVIEW: CONTEMPORARY NIGHT
WORLD OF CRETE GALLERY EXHIBITION
CRETE ISLAND | OCT 1-4, 2022
VILLA MOMA | CHANIA

Online Exhibition :
The Arbitrary Chemistry-media art and progress
Virtual Artist Gallery
London | May 29 – June 12, 2022

Online Exhibition :
The Butterfly Effect
Contemporary Art Curator Magazine
| February 23 - July 23, 2022

Online Exhibition
Rise
Tapiialvirtual Gallery
Santiago, Chile | November 17 - December 8, 2022

Digital Screen Exhibition :
Carrousel du Louvre - Art Shopping Expo
Artio Gallery
Paris | April 8-10, 2022

Metaverse Exhibition
"I" Revolve around the world
MADS Gallery
Milan | January 28- February 2, 2022

ABOUT



SHE STATES “The ideas of each artwork sometimes are guided through my intuition from the voice within”. She tries to convey the message of the artwork to touch upon the viewers. She hopes that her artwork has spoken to the viewers in a certain way.

STYLE : contemporary, expression, abstract

BACKGROUND:

Natha Out of the Blue represents part of her name (Nathakorn Saengtongaram) and her spontaneity. Chiangmai, north of Thailand is her origin working studio base. She is a self-taught artist that has been creating her subject matter that blends with her inspiration and design on her canvas with several techniques she inspired.

Painting on canvas, she will be preparing her gouache color from the pigment mixing them with the binders. She uses gouache to have some earth tone that she likes. Acrylic colors still take part and are playful on her canvas. The way “OUT OF THE BLUE” action has inspired her most of the time. It is when she feels drawn to establish the creation with a plentiful amount of energy.



CONTACT

INSTAGRAM: WWW.INSTAGRAM.COM/NATHA_OUTOFTHEBLUE/

FACEBOOK: WWW.FACEBOOK.COM/NATHAOUTOFTHEBLUE

EMAILS : NATHA.OUTOFTHEBLUE11@GMAIL.COM

WEBSITE: WWW.NATHAOUTOFTHEBLUE.COM